



STATE ...OF THE... PENNY

2 0 2 5





Welcome





Dr. John Thompson

Assistant County Administrator





COMMENT CARD

If you have a question, please write it in the space below. Staff will collect cards from the aisles. **Questions will be asked by the moderator as time allows.** Please fill in your contact information so we can send you the answer to your question if it is not addressed this evening.

My question is:

.....

.....

.....

.....

.....

NAME

ADDRESS

EMAIL

PHONE

Funding for the State of the Penny Address and support materials provided by the Richland County Office of Communications.





Email Your Questions!

stateof**thepenny**@richlandcountysc.gov



STATE ...OF THE... PENNY

2025





Paul Livingston

*District 4 County Councilman
Transportation Ad Hoc Committee Chair*

The Transportation Penny

A Multifaceted Process

- Community input & community requests
- Needs assessments
- Project development & budgeting
- Citizens Committee (Advisory Committee)
- Council Committee (Ad-Hoc Committee)
- Budget proposal and approval (Council)



The Transportation Penny

A Multifaceted Process

- Project Design
- Bidding and Contracting
- Scheduling and Construction
- Project Completion



The Transportation Penny

A Multifaceted Process

*A thorough, interdependent,
decision-making process from
concept to completion*



The Transportation Penny

A Multifaceted Process

COLLABORATIVE

TRANSPARENT

SUCCESSFUL





John Black

Transportation Penny Advisory Committee Chair



Citizen-Driven

Transportation Penny Advisory Committee

Richland County's TPAC is a 15-member citizen advisory group with representatives from the municipalities and unincorporated areas of the County.



Transportation Penny Advisory Committee

Arcadia Lakes

Donald Vanvranken

Blythewood

Richard McKenrick

Columbia

Peyton Bryant

Creston Brown

John Black (Chair)

Eastover

Leroy Faber

Forest Acres

Haskell Kibler

Irmo

Clint Scoville

Representing Richland County

Eva Prioleau (Vice Chair)

Candace Pattman (Secretary)

Chris Keefer

Shirley Robinson

Kamal Shlon

Algerron Williams Sr.

Ashton Williams



Purpose and Commitment

Transportation Penny Advisory Committee

To review and provide recommendations to the Transportation Ad-Hoc Committee and to County Council, and to serve as a conduit for public oversight, representing the voices of the County's residents.



Purpose and Commitment

Transportation Penny Advisory Committee

We are the bridge between County leadership and the public interest.



A New Era for TPAC

Expanded Powers and Responsibilities

- Reviewing County-wide transportation needs
- Developing principles and best practices to guide project planning and implementation
- Advising on project scoring, prioritization, and equity
- Receiving and incorporating municipal input into broader transportation planning
- Making formal recommendations on project list modifications and RFP scopes



Council Resolution: Trust and Partnership



Our Goal

To help ensure the Penny program continues to serve the County in a way that is strategic, community-informed, and results-driven.



Michael Maloney

*Richland County Public Works Director
Transportation Penny Department*

The Transportation Team

Program Managers

- Alexander Burton
- Dr. Ali Eliadorani
- Michael Green
- Jeffrey McNesby
- Rasheed Muwwakkil
- Ted Thomas

Administration

- Wendy Garner
- Nathaniel Miller
- Whitney Strother
- Ya'kia Washington

Engineer Inspectors

- Blane Bryant
- TaShyana McDonald
- Melvin Miller
- Tanner Threatt
- Olivia Wilson



Facts & Figures

The 1% Sales Tax

- Approved in November 2012 by referendum
- Tax collection began in May 2013
- Maximum collection: 22 years or when \$1.07 billion is reached, whichever comes first
- County's Finance Department predicts \$1.07 billion will be collected by January 2027
(current collection rate basis w/minor growth)
- The collection period is estimated at 13.5 years



Facts & Figures

Current Status

- We are 12 years into the collection - 54% of 22 years
- Penny revenue is currently \$884 million - 83% achieved
- Additional grant funding of \$35.5M has extended program funding to \$1.105 billion
- Project expenses currently total \$661M - 61.0% achieved
- Scheduled projects continue until the fund is fully used



Revenue Update

CFY14 - FY25*

Transportation Penny Tax	\$ 884,459,159
Interest from State	\$ 3,589,608
Interest earned by County	\$ 46,058,939
Miscellaneous Revenue	\$ 2,130,259
General Fund Payment	\$ 16,538,255
Finance Cost	\$ (5,702,370)
Grant Funds	\$ 30,288,964
Total Revenue	\$ 977,362,814

***Revenue as of May 2025**

Expenditure Update

FY14 - FY25*

	FY14-FY19	FY20	FY21	FY22	FY23	FY24	FY25*	Total
ROADWAY	\$223M	\$31M	\$23M	\$18M	\$24M	\$33M	\$13M	\$365M
BIKE/PED	\$14M	\$2M	\$3M	\$1M	\$1M	\$2M	\$6M	\$29M
COMET	\$114M	\$15M	\$23M	\$25M	\$29M	\$28M	\$21M	\$255M
PROGRAM RESERVE	\$0	\$0	\$0	\$0	\$12M	\$0	\$0	\$12M
TOTAL	\$351M	\$48M	\$49M	\$44M	\$66M	\$63M	\$40M	\$661M

***Expenditures up to May 2025**

Project Funding

PROJECT CATEGORY	ORIGINAL FUND	CURRENT FUND	EXPENDED TO DATE	REMAINING FUND	FORECAST
ROADWAY PROJECTS	\$656M	\$689M	\$365M	\$324M	\$409M
PROJECT RESERVE	\$0	\$46M	\$0	\$46M	\$0M
TOTAL BIKE/PED/GREENWAY	\$81M	\$84M	\$29M	\$55M	\$36M
COMET EXPENDITURES	\$301M	\$301M	\$255M	\$46M	\$46M
PROGRAM RESERVE	\$32M	\$63M	\$12M	\$51M	\$32M
TOTAL PROGRAM	\$1.07B	\$1.18B	\$661M	\$523M	\$523M

Some Penny Impacts

Roads & Transportation

- 130+ miles of roads resurfaced
- 550+ roadways, bikeways & greenways completed
- 96 dirt roads paved
- 13 new intersections constructed



Some Penny Impacts

Jobs & Economic Development

- Nearly 20,000 new jobs
- Nearly 4,000 new businesses
- Over \$4.7 billion in total investment
- \$1.1 billion in direct investment
- 60% decrease in unemployment
- 2.5 million new annual visitors



Preserving the Penny

Continuing the 1% Sales Tax

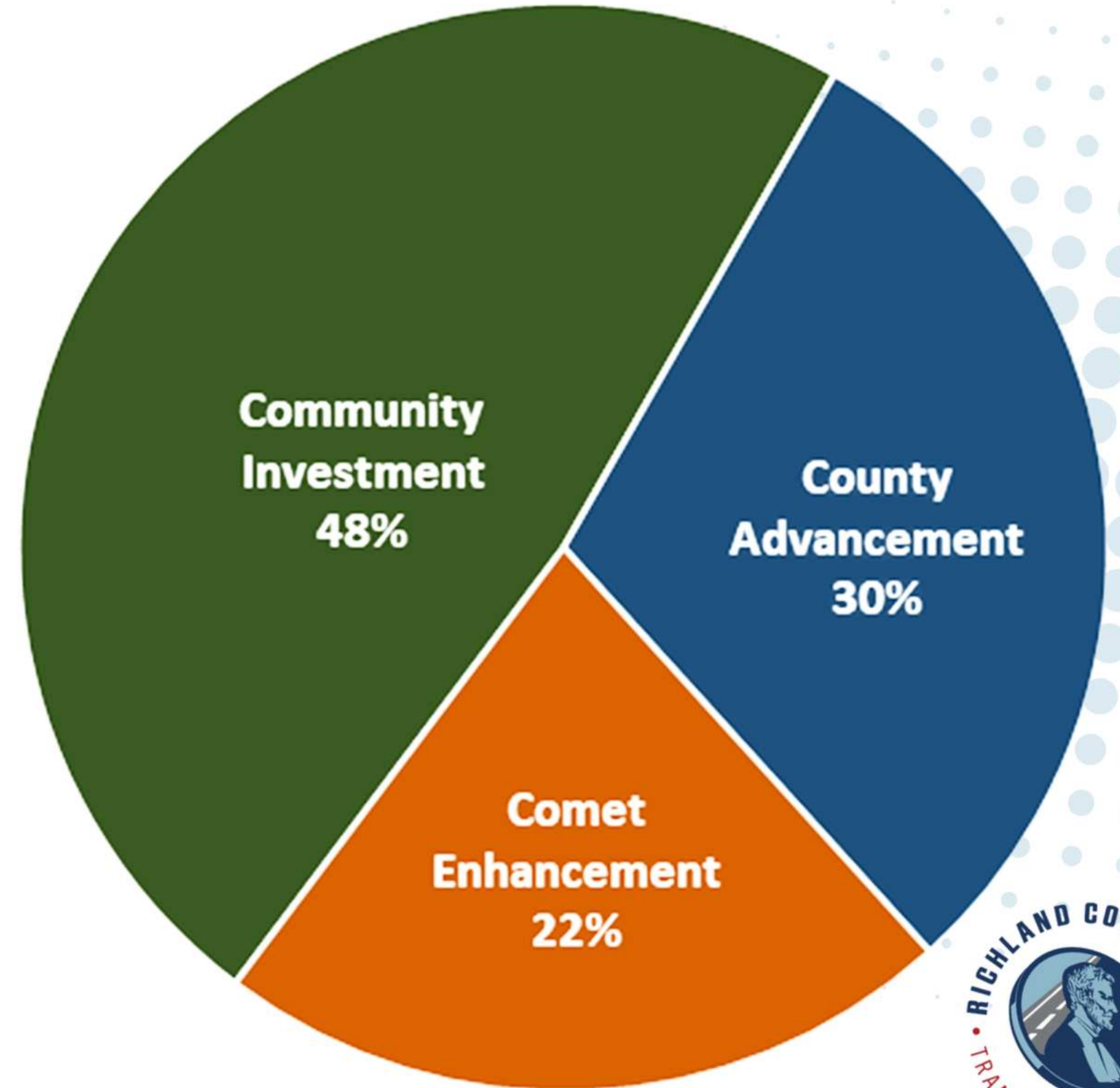
- Approved in November 2024 by referendum
- Tax collection starts when current Penny concludes
- Maximum collection = 25 years or when \$4.5 billion is reached, whichever comes first
- Up to \$950M in bonding approved by referendum



Preserving the Penny

How It Works

- First launch - 2012 remaining projects
- Provide minimum of \$20M for each Council district
- Use **6 Principles** to recommend new projects



Preserving the Penny

6 Guiding Penny Principles



Additional Funding Sources

Availability of matching state or federal funds
(up to 10 points)



Overall Impact and Cost Ratio

The number of County residents affected by the project
(up to 20 points)



Safety

The effect a project would have on improving public safety
(up to 25 points)



Preserving the Penny

6 Guiding Penny Principles

4

Improvement of Overall Condition

The effect of project improvements on blighted conditions
(up to 10 points)

5

Economic Development

The impact a project would have on economic development in the County
(up to 20 points)

6

Public Support

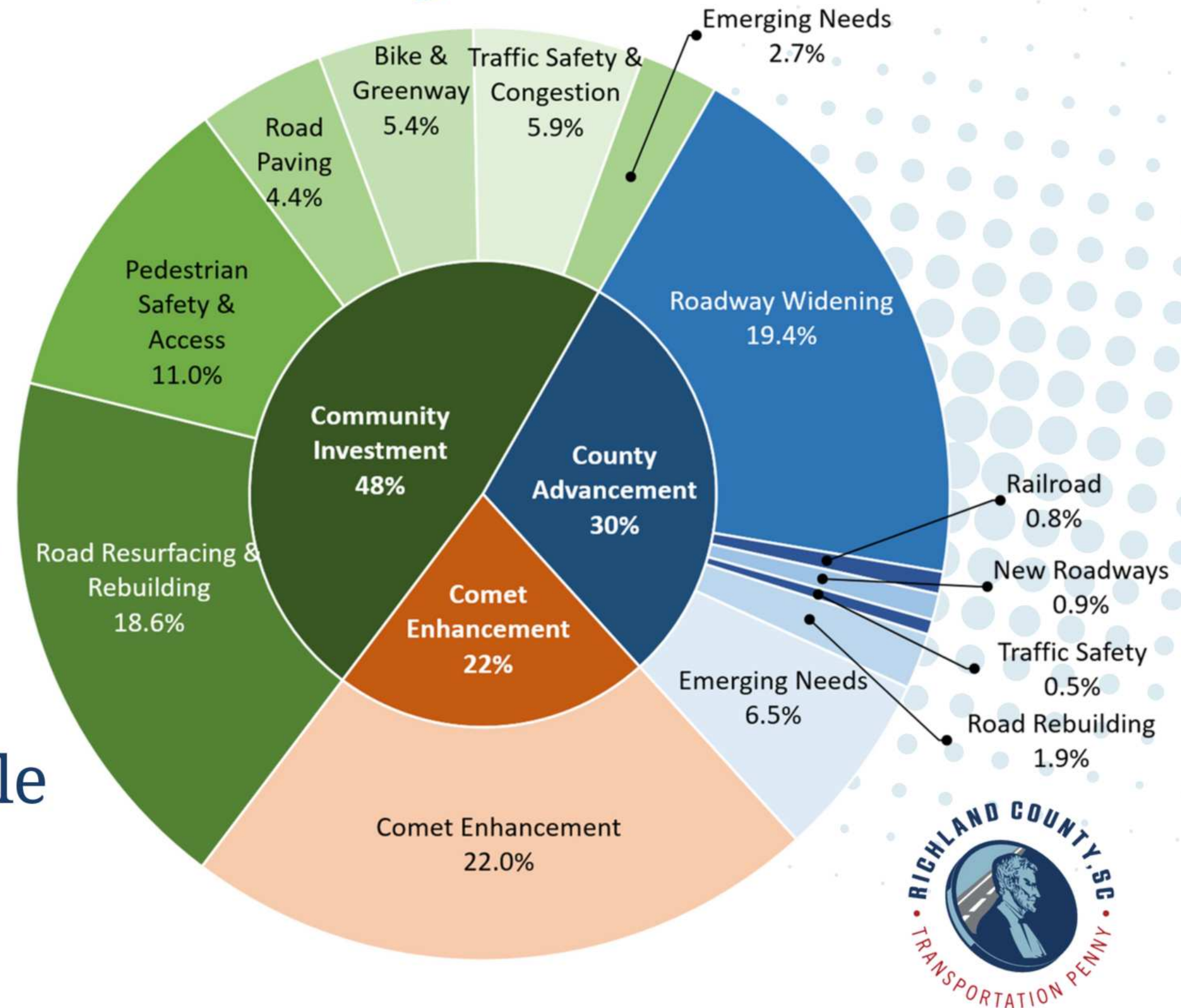
The input of the public and other stakeholders (e.g., municipalities)
(up to 15 points)



Preserving the Penny

How It Works

- Track funding to each category as required
- Annual Project Development Plan approval
- Funded at each County budget cycle



Preserving the Penny

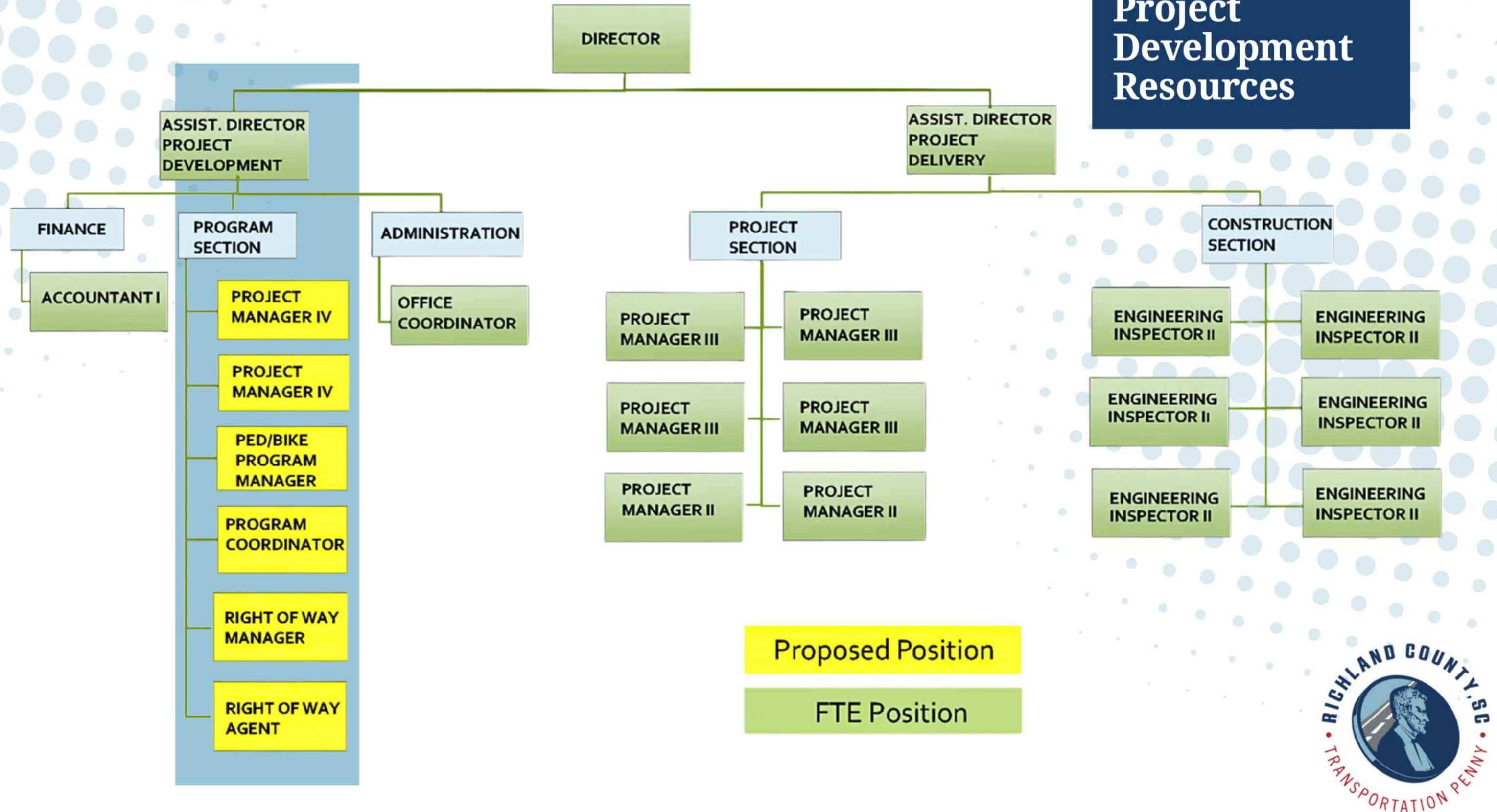
Project Development Plan

- Collect and solicit information throughout the year using the new Project Development Division of the Transportation Penny Department
- Compare project scoring / score new and emerging needs
- Project Development Plan prepared each August
- TPAC October meeting to recommend output to TAHC



Preserving the Penny

Project Development Resources





Maurice Pearl

Executive Director and CEO

The COMET/Central Midlands Regional Transit Authority





RICHLAND COUNTY
Transportation Penny



The COMET:

Elevating Mobility for the Next 25 Years



Thank you, **Richland County**. The COMET remains committed to being a **trusted community partner**.



Benefits Thanks to the Penny

- **Miles traveled has increased 39%** from 1,676,770 miles in 2012, to **2,334,605 miles in 2023.**
- **29 new routes** were added to connect more people to their destinations, bringing the total to 47 in 2023.
- The COMET has added **29 new busses** to its fleet, bringing the total from 68 in 2012, up to 97 in 2023.
- Ridership has **increased 35%**, from 1.4 million in 2012, to **1.9 million in 2023.**
- There were only 15 benches and zero shelters in 2012. As of 2023, that number has grown to **160 bus shelters and 196 benches.**



Moving Forward

Over the Next 25 Years:

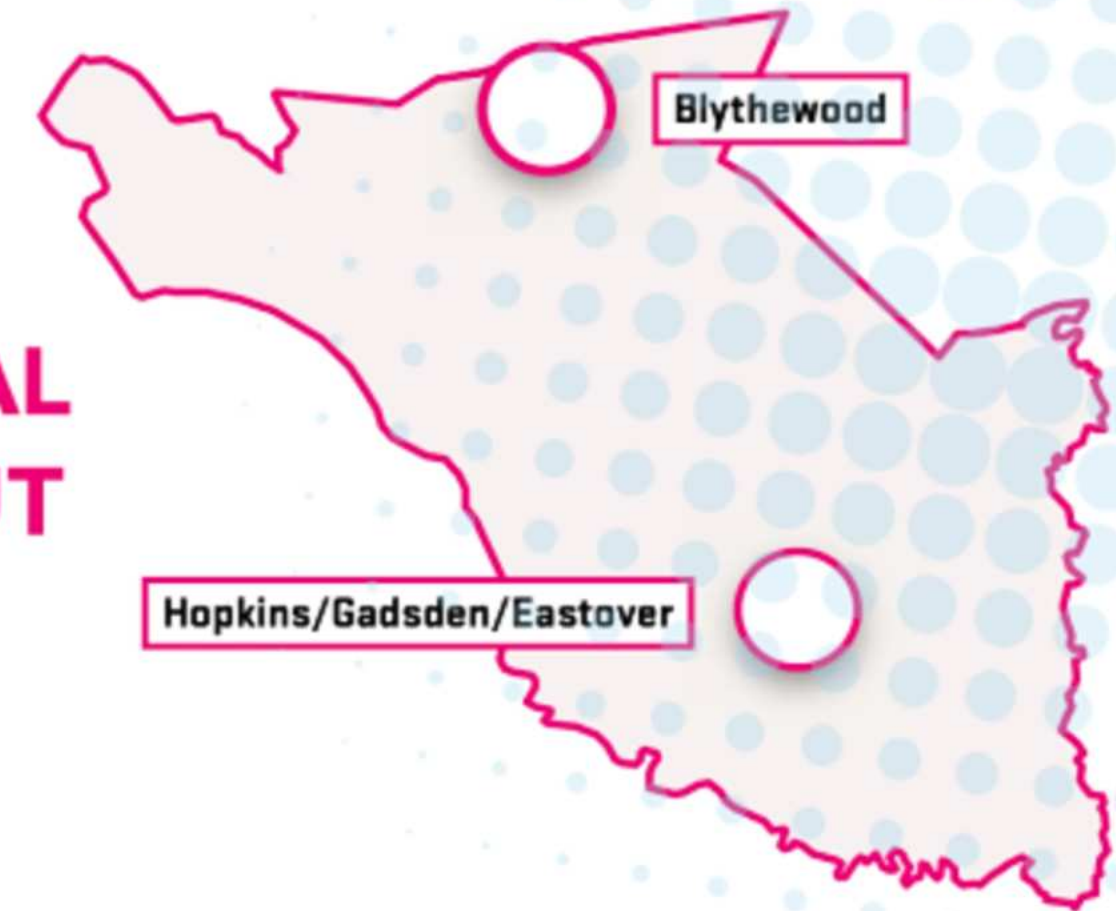
- Enrich and broaden services
- Modernize infrastructure
- Extend service routes
- Enhance service frequency
- Increase efficiency and responsiveness



Moving Forward

Prioritized Service Components:

- 1 EXPAND AND ENHANCE GEOGRAPHICAL COVERAGE THROUGHOUT RICHLAND COUNTY**



Moving Forward

Prioritized Service Components:

**2 INCREASE FREQUENCY
ON HIGHEST
RIDERSHIP ROUTES**



Moving Forward

Prioritized Service Components:

**3 TARGETED
CUSTOMIZED
FIXED ROUTE
PROGRAMS**



Moving Forward

Prioritized Service Components:

4

RECONFIGURATION OF ROUTES

- Reconfigure current system to include multiple direct routes, rather than just multiple changes.
- Think of it as direct flights, rather than layovers or stopovers in Atlanta or Charlotte.



Thank you!



**RICHLAND COUNTY
Transportation Penny**



John Boylston

*Chief Engineer for Project Delivery
S.C. Department of Transportation*



SCDOT Update

Partnering with Richland County for a Bright Future

John Boylston, PE

Chief Engineer for Project Delivery





4500
EMPLOYEES

41,000

MILES OF STATE
MAINTAINED
ROADWAYS



7

DISTRICTS



SCDOT
SNAPSHOT

8,400
BRIDGES
MAINTAINED



Realizing the Promise of Infrastructure in SC

\$6.6B in construction projects across the state

Up from \$1B just 10 years ago.

\$5.1B in 2017 Roads Bill Funds

Since the General Assembly's bold action.

\$900M in One-Time General Assembly Funds

For infrastructure in the past three years.

10-Year Plan Accomplishments

RURAL ROAD SAFETY

The completed projects have seen a 20% reduction in Fatal and Serious Injury crashes

1142 miles



PAVING

Approaching one-fourth of the 4th largest state highway system being repaved in the past 7 years.

>9620 miles



BRIDGES

Bridges must continue to be a major focus and an area for additional investment

408 bridges



INTERSTATES

Work is underway on nearly every interstate in the State

111 miles



Rural Road Safety



Recent Rural Road Safety Projects In Richland County

US 76

MP 33.3 (Near SC 769) to MP 46.6
13.3 miles

Let in January 2024 for \$17.8 Million
Completion Date: October 31, 2026

US 601

MP 18.71 to MP 23.71
5 miles

Partnered with SCDOT Maintenance
Resurfacing Project

Paving

From 2023 to present day, SCDOT has resurfaced or will resurface over 75 miles of roadway in Richland County...

Major Roads – 32 miles

- ✓ Broad River Road
- ✓ Two Notch Road
- ✓ Dutch Fork Road
- ✓ *Forest Drive*

Farm to Market Secondary Roads – 25 miles

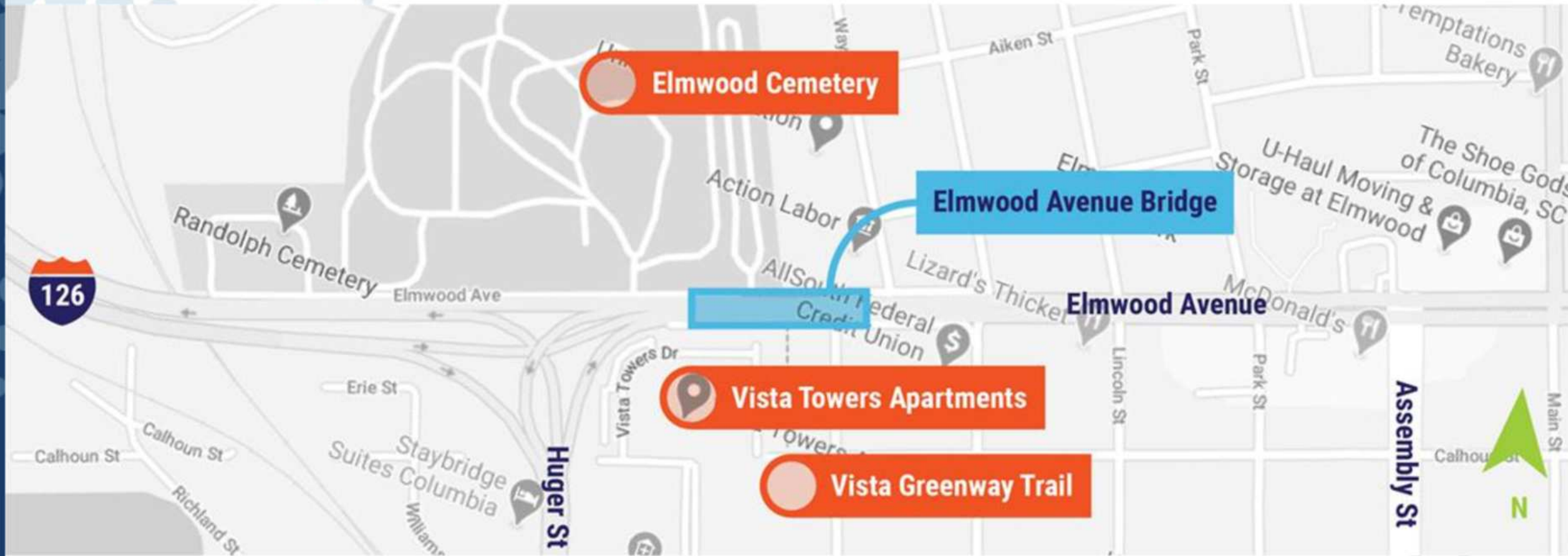
- ✓ *Air Base Road*
- ✓ *Rabon Road*
- ✓ South Beltline Blvd
- ✓ *Columbia College Dr*

Neighborhood Streets – 18 miles

- ✓ Bethel Church Road
- ✓ North Royal Tower Road
- ✓ *Chandler Avenue*
- ✓ Bitternut Drive



Bridges: Elmwood Avenue Bridge Project



Elmwood Ave (P030419)

- Replace existing bridge over SCL railroad / Wayne Street in downtown Columbia
- Initial public engagement took place in 2021
- Project was delayed until this year
- Resume public engagement Fall 2025



Bridges: US 176 River Drive over SCL

PROJECT STUDY AREA



US 176 Project (P030421)

- Replace existing bridge over SCL railroad in Columbia
- PIM held in April 2023
- Approved CE issued in October 2024
- Right-of-way acquisitions to begin Fall 2025
- Proposed letting Spring 2027

Interstate Progress



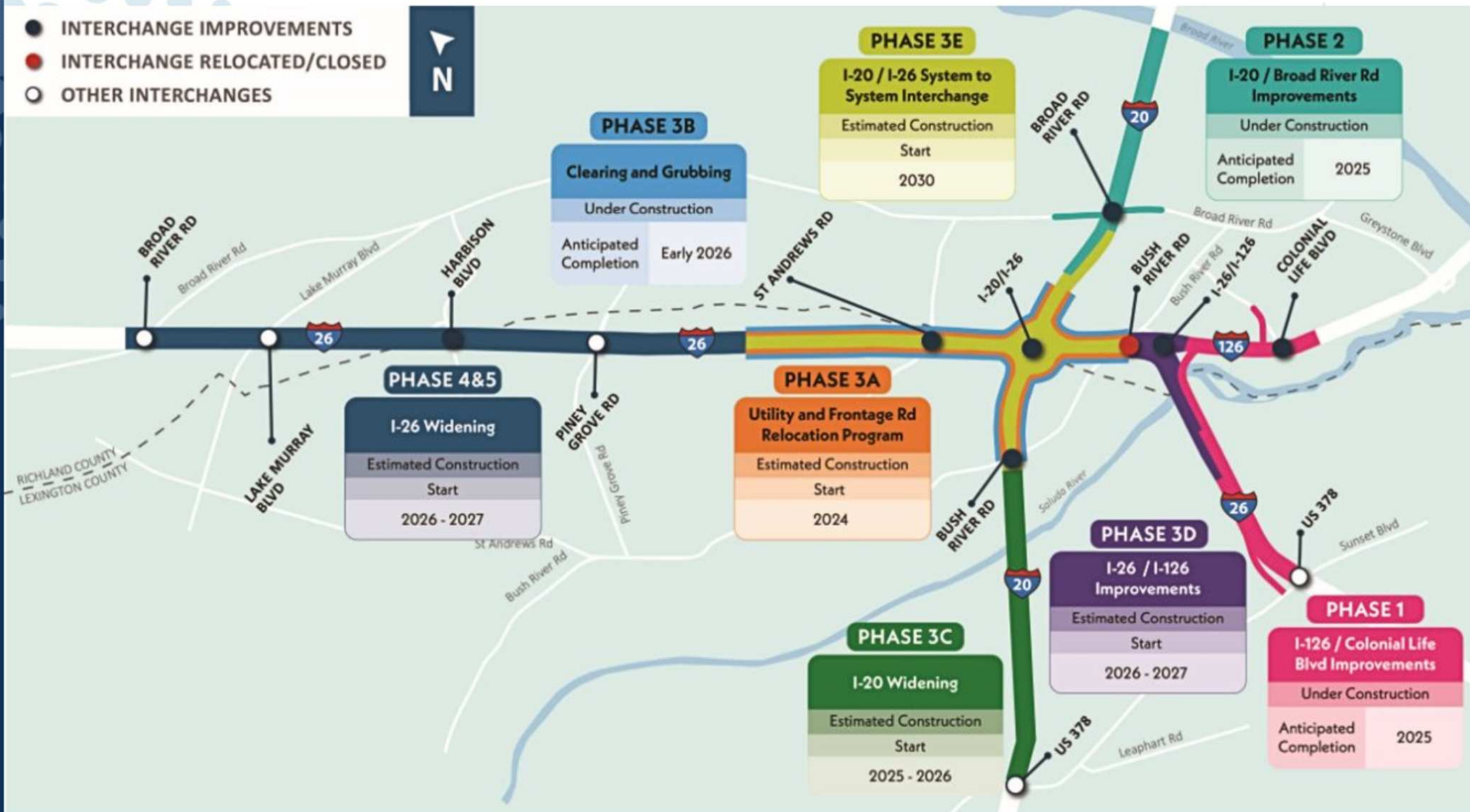
COMPLETED

IN CONSTRUCTION

DESIGN

PLANNING

Interstate Progress: Carolina Crossroads Re-Phasing



South Main Street Streetscaping Improvements

- Pendleton St. to Blossom St.
- Widened Sidewalks, separated bike lane, on-street parking
- Enhanced aesthetic elements: trees and other plantings, park benches
- Pedestrian Safety Enhancements
- Total Project Cost: \$27.6 Million
- Funding: COATS, TAP, Richland CTC, *Richland County*, USC



Hardscrabble Road Widening

- Widening from Farrow Road to Rimer Pond Road
- Total Cost \$100.9 Million
- Richland County Contribution \$29.9 Million
- Utilities major source of delays
- All Lanes open by mid-July

Broad River Road Widening

- Richland County Penny Widening Project
- State Owned/Maintained Facility
- Impacts to City of Columbia Water Line

The Road Ahead: Emerging Trends



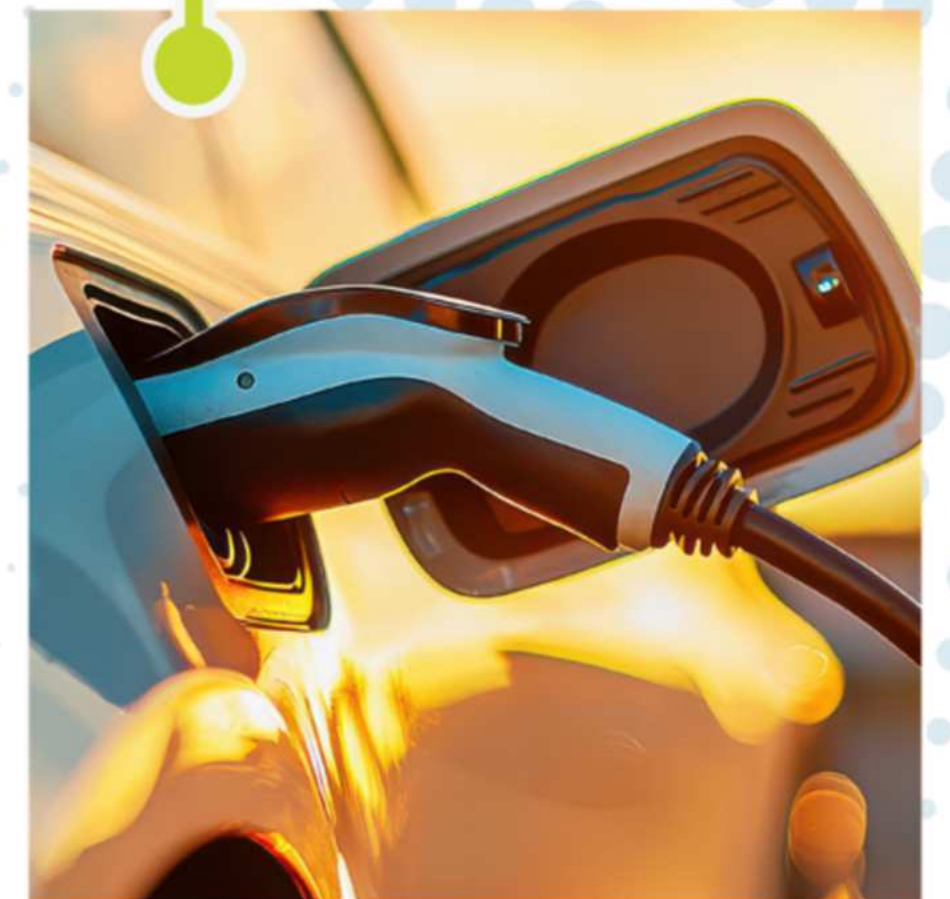
**GROWING
PORT**



**DEMOGRAPHIC
CHANGES**



**CHANGING
TECHNOLOGY**

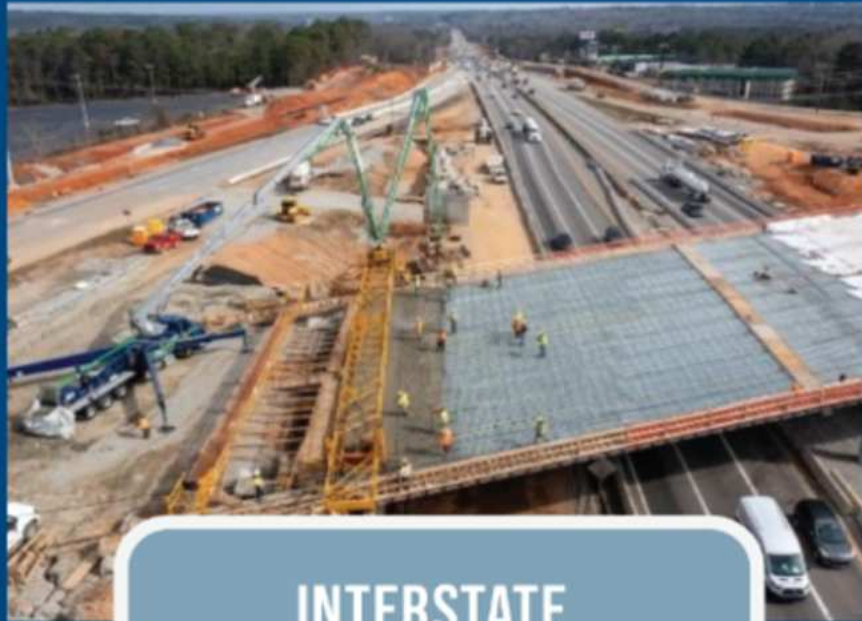


MOMENTUM 2050

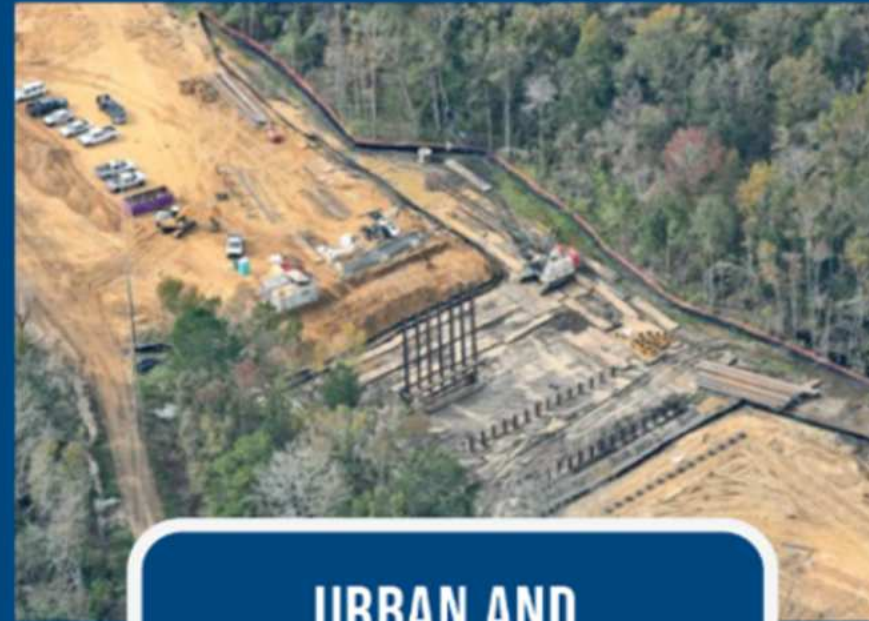
Moving South Carolina Forward



CONTINUING
SYSTEM RECOVERY



INTERSTATE
INVESTMENT



URBAN AND
RURAL MOBILITY



SUPPORTING
MULTIMODAL PARTNERS

THE CONNECTOR

Sign up for the e-Connector
and stay in touch with SCDOT





Jesica Mackey

Richland County Council Chairwoman





Richland County Strategic Goals

- foster good governance
- invest in economic development
- commit to fiscal responsibility
- plan for growth through inclusive and equitable infrastructure
- achieve positive public engagement
- establish operational excellence











STATE ...OF THE... PENNY

2025



Catch the Latest Penny News

- Visit RichlandPenny.com
- Subscribe to the Penny Progress Newsletter
- Follow the Transportation Penny on Facebook
- Follow all Richland County social media
- Check EVENTS page at RichlandCountySC.gov





ROADMAP TO THE FUTURE

RICHLAND COUNTY
SOUTH CAROLINA





Thank You for Coming!



STATE ...OF THE... PENNY

2025

